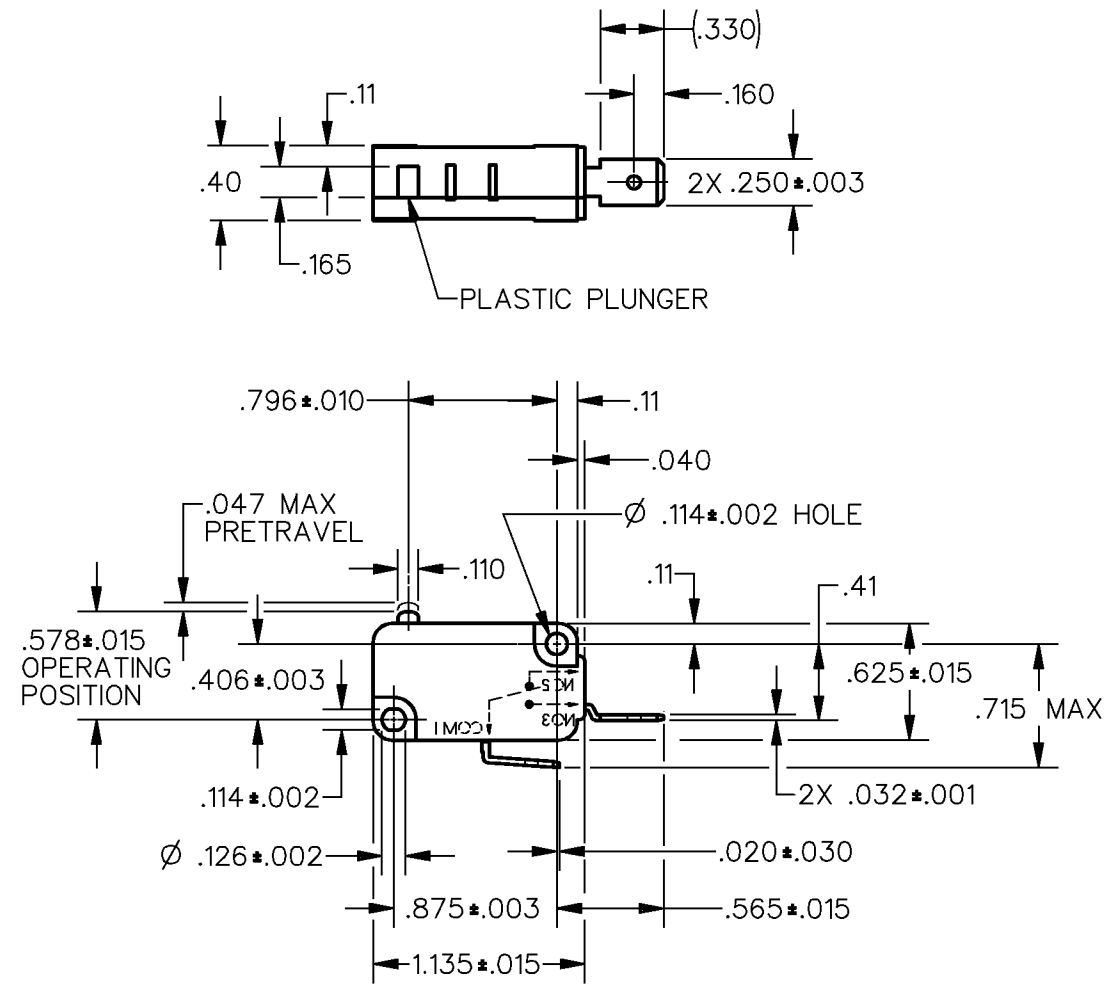


HONEYWELL
PART NUMBER
V7-9W2AE9
CWC6393

REV	DOCUMENT	CHANGED BY	CHECK
B	0009549	DVM 19NOV04	AK



NOTES

- 1 - MAXIMUM MECHANICAL DEAD BREAK OF .0025 CAN BE EXPECTED WITH THIS SWITCH CONSTRUCTION
- 2 - SILVER PLATED TERMINALS
- 3 - SWITCH WILL FUNCTION A MINIMUM OF 1000 ACTUATIONS AT RATED LOAD WHILE EXPOSED TO A 350°F ENVIRONMENT FOR 600 HOURS

REPLACES X115872-V7

CHARACTERISTICS OPERATING FORCE— — —300 GRAMS MAX RELEASE FORCE— — —25 GRAMS MIN DIFFERENTIAL TRAVEL— — —.010 MAX OVERTRAVEL— — — — —.050 MIN FREE POSITION— — — — —.630 MAX RELEASE TRAVEL— — — — —.010 MIN	ELECTRICAL DATA CONTACT ARRANGEMENT S P N O L264 15.1A 125, 250, 277 VAC 	DESIGN UNITS: INCH TOLERANCES UNLESS NOTED: NO PLACE X ± 0.040 ONE PLACE .X ± 0.030 TWO PLACE .XX ± 0.015 THREE PLACE .XXX ± 0.005 FOUR PLACE .XXXX ± 0.0005 ANGLES ± 2 THIRD ANGLE PROJECTION 	DRAWN KSR 09NOV04 CHECK AK 09NOV04	Honeywell TITLE SWITCH - BASIC		
			THIS DRAWING COVERS A PROPRIETARY ITEM AND IS THE PROPERTY OF HONEYWELL. THIS DRAWING IS NOT TO BE COPIED OR USED WITHOUT THE PERMISSION OF HONEYWELL. INTERPRET PER ASME Y14.5M-1994 OTHER HONEYWELL ENGINEERING STANDARDS MAY APPLY			